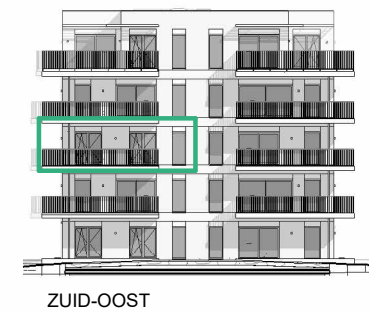
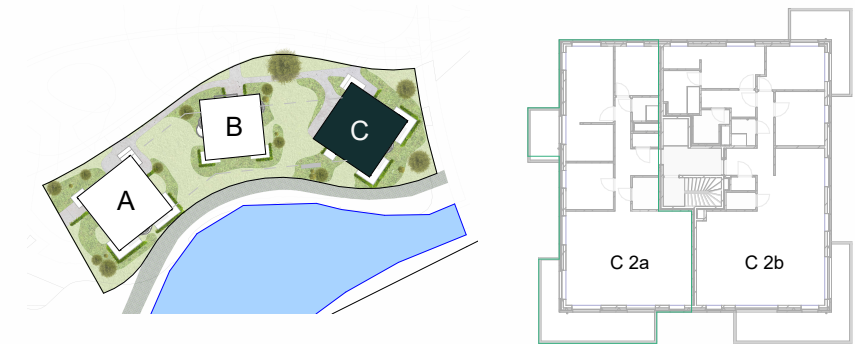
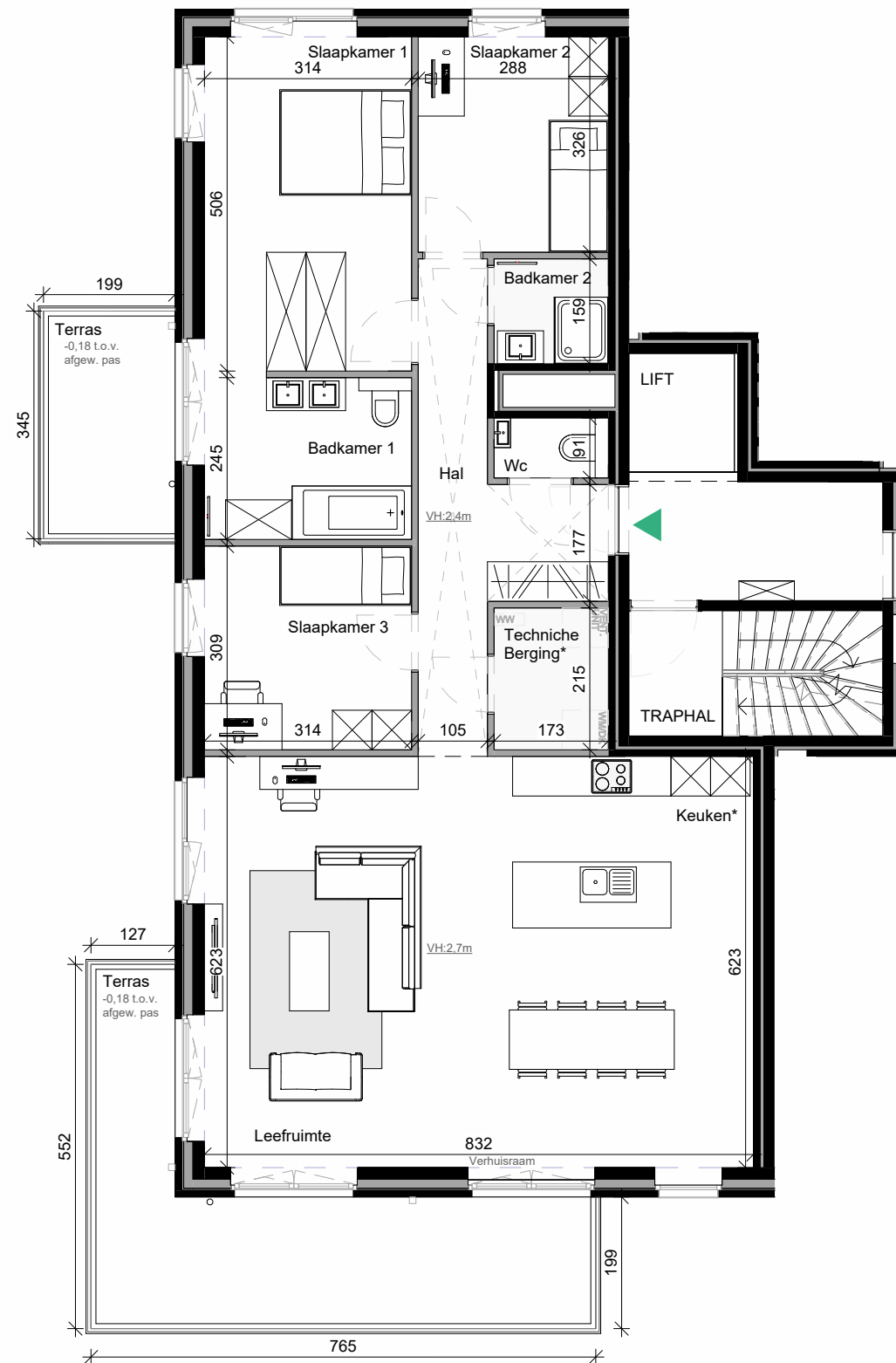


Heizijde

EMERALD

HEI.PF.C.02.a

BASISPLAN



SCHELLEN
ARCHITECTEN

11/05/2022

Meubilair illustratief - Maten en oppervlaktes richtgevend
* Keuken en technische berging: maatvoering en inrichting indicatief

Inlichtingen en verkoop
03 260 95 60